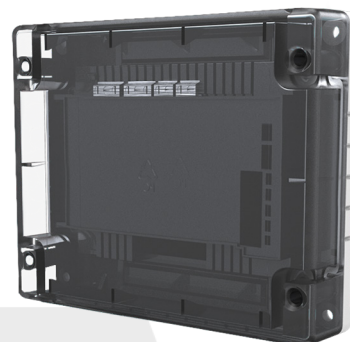


CHQ-PCM(SCI)

Analogue Plant Control Module

Features

- ▶ Loop Powered with Single Loop Address
- ▶ Provides 4 change-over relay outputs, 4 independent inputs for monitoring of volt free contacts (utilises 8 sub-addresses)
- ▶ Also available as DIN
- ▶ Both models feature an integral SCI
- ▶ Deeper, glanded IP65 backbox available
- ▶ Can be used with CHQ-BACKBOX to comply with BS 7671
- ▶ Approved by LPCB
- ▶ SIL2 and Railway Approved variants available.



Description

The CHQ-PCM(SCI) is a loop powered input/output module with four independent change-over relay outputs and four monitored inputs. The outputs feature N/O and N/C volt free contacts and can be driven separately under the control of the fire alarm panel, to be used for the control of devices such as dampers or for plant and equipment shutdown. The four inputs are provided for local fire and fault monitoring and these are fully monitored for open and short circuit, which if required, can be enabled or disabled in pairs

using a two-way DIL switch.

Note: The state of the relay contacts will be indeterminate until the unit is powered. A back box is also available (CHQ-BACKBOX) which, when used in conjunction with the CHQ-PCM(SCI), increases the IP rating to IP65. When using heavy cables we recommend the use of the SMB-1 Module Enclosure in conjunction with the SMB-ADAPTOR plate. The unit is also available in a DIN Rail mountable enclosure – CHQ-PCM/DIN(SCI).

Specification

Ordering code	CHQ-PCM(SCI) - Module / CHQ-PCM/DIN(SCI) - DIN module		
Operating voltage	17 – 41 VDC		
Transmission method	Digital communication using ESP		
Quiescent current (typ)	330 μ A		
Current consumption (whilst polling)	22 mA \pm 20 %		
Relay contact rating	30 VDC max, 1 A (resistive load)		
Input EOL resistor	10 K Ω , \pm 5%, 0.25 W		
Input threshold level	ON=470 Ω , Short cct <50 Ω , Open cct >100 K Ω		
Maximum rated current	1 A (switch closed)		
Leakage current	3 mA (switch open)		
Weights (g) / Dimensions (mm)	CHQ-PCM (SCI)	322 (567 with lid and backbox)	(with lid) L 157 x W 127 x D 35 (with lid and backbox) D 79
	CHQ-PCM/DIN (SCI)	150	L 108 x W 119 x D 24



For further information visit our website. Hochiki reserves the right to alter the specification of its products from time to time without notice. Although every effort has been made to ensure the accuracy of the information contained in this document it is not warranted or represented by Hochiki to be a complete and up-to-date description. Check online for current version.