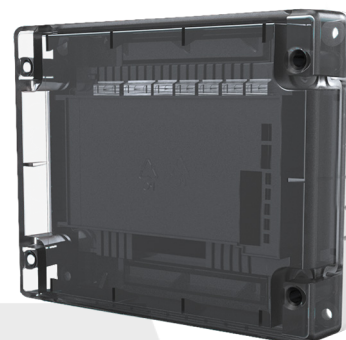


CHQ-FTM

Analogue Dual Input 4-20 mA Module

Features

- ▶ Single loop address
- ▶ Loop powered
- ▶ 2 Independent inputs for monitoring equipment with 4-20 mA outputs
- ▶ Each input has 4 user selectable analogue threshold levels
- ▶ Two remote LED outputs
- ▶ Inputs can be inverted
- ▶ DIN Rail version available
- ▶ Approved by LPCB.



Description

Model CHQ-FTM is a Dual 4-20 mA Input Module designed to interface to equipment with 4-20 mA outputs such as Gas Detectors, Flame Detectors and Industrial equipment. Also available as a DIN Rail mountable version. A back

box is also available (CHQ-BACKBOX) which, when used in conjunction with the CHQ-FTM, increases the IP rating to IP65.

Specification

Ordering code	CHQ-FTM and CHQ-FTM/DIN		
Operating voltage	17 – 41 VDC		
Quiescent current (typ)	330 µA		
Current consumption	22 mA ± 20 % (polling)		
Full scale range for I/P1 & I/P2	0-25.5 mA		
Input E.O.L. resistor	10 kΩ, ±5%, 0.25 W		
Normal Range for I/P1 & I/P2	4 to 20 mA		
Max short-circuit current (loop)	1 A		
Output rating	17-41 VDC* - Current limited to 8 mA		
Colour, Case Material and Weights / Dimensions (mm)	Module Enclosure	321 (add 235 to weight when using CHQ-BACKBOX)	L157 x W127 x D35 (Module & Lid) D79 (Module, Lid + CHQ-BACKBOX)
	DIN Enclosure	124	L119 x H108 x H24
Operating temperature range	-20°C to +40°C		
Operating humidity	RH 95% non-condensing		
IP rating	IP20		

*Loop voltage
Please ensure control panel compatibility