

SERIES 03-017343-12X

Installation Instructions For Fire/Overheat Detector Assembly

FENWAL®

06-237240-001
October 2016

DESCRIPTION

The Heat Detector Assembly includes part number 17343-124 Heat Detector and Field wire Terminal housing. The assembly is available in two orientations: Right as part number 03-17343-127; Left as part number 03-0173343-126. The internal connections are the same in both styles. For additional details on the Heat Detector, refer to the Operation and Maintenance Instructions for Fire / Overheat Detector for Series 17343-124.

The Assembly 03-017343-127 / 03-017343-126 is designed for:

- Installation in potentially explosive atmospheres requiring ratings:



Korean Cert # 14-KB4BO-0668X
Ex nC IIC T3



II 3G Ex nA nC IIC T3 Gc
IEC Ex ETL 12.0015X
-20°C ≤ Ta ≤ 198°C
ITS12ATEX47636X

IECEx Conditions of Certification:

The enclosure shall be installed to a flat rigid surface using the mounting means provided.

All conductors/cables shall be suitable for a temperature of 200°C.

All cable/conduit fittings shall be certified equivalent to the marking on the apparatus and have a minimum IP54 rating.

Not more than one single or multiple strand lead shall be connected into either side of any terminal, unless multiple conductors have been joined in a suitable manner, e.g. two conductors into a single insulated crimped boot lace ferrule.

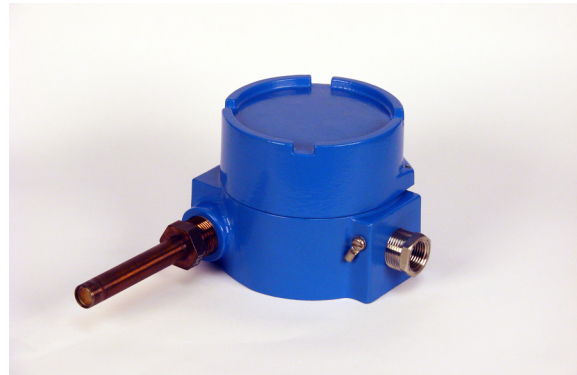
Leads connected to the terminal shall be insulated for a minimum 125V and the insulation shall extend to within 1mm of the metal terminal throat.

All terminal screws, used or unused, shall be tightened down.

- Series 17343-124 is available with the following Temperature Settings:

Set Point	Color Band*
140°F±7.5°F (60°C±4.2°C)	None
325°F±10°F (163°C±5.6°C)	Red
425°F±15°F (218.3°C±8.3°C)	Green
600°F±20°F (316°C±11.0°C)	Orange
725°F±25°F (385°C±14°C)	Gray

* The settings are noted by the color of the band applied to the tip of the heat detector shell of 17343-124.



REQUIRED TOOLS

The following tools are required for installation:

- Qty (1) .14 flat tip screw Driver, 3" (76.2mm) long Min.
- Qty (1) 1/16" (4.2mm) Hex "Allen" wrench
- Qty (1) Wire Strippers
- Qty (1) Adjustable Wrench

INSTALLATION



WARNING

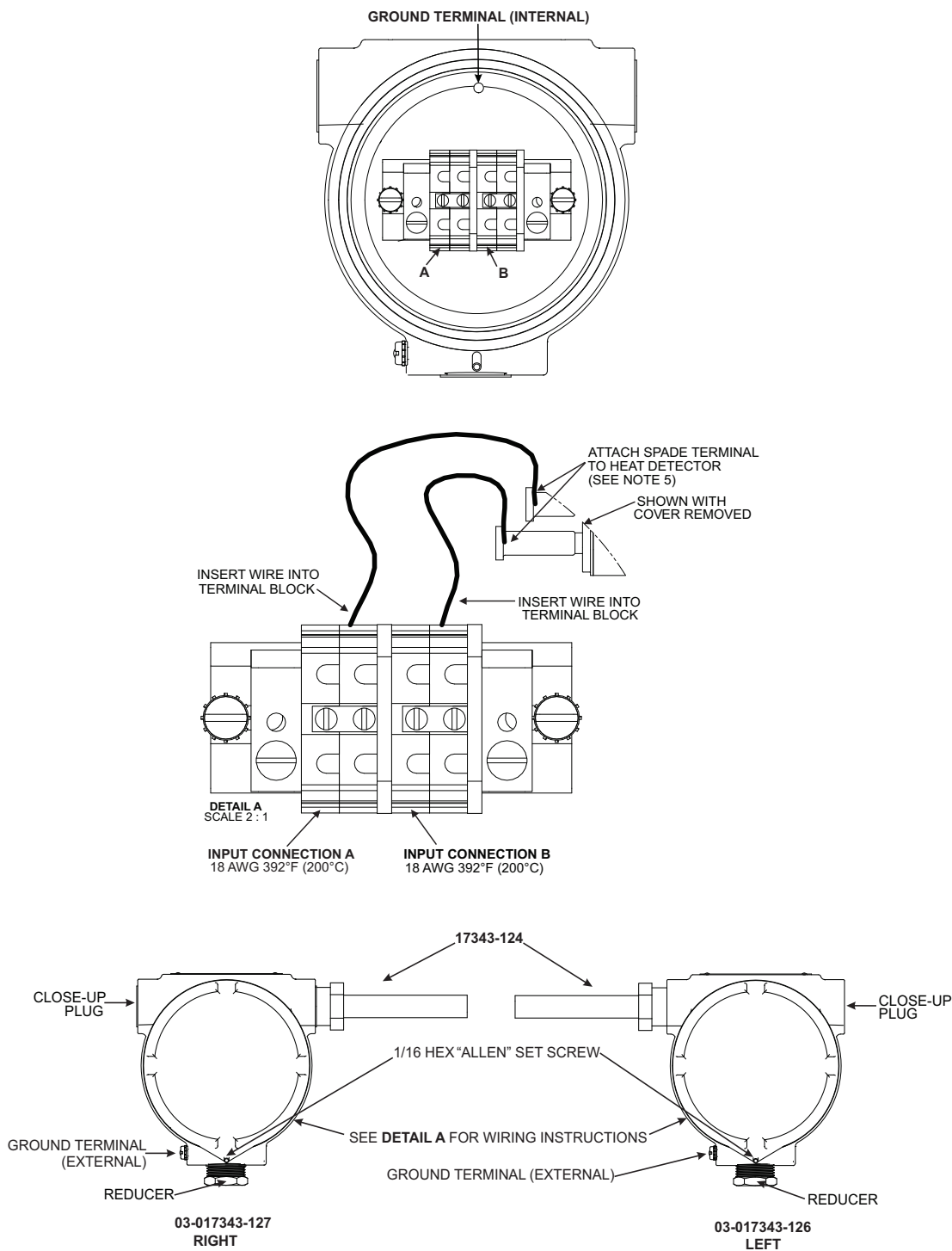
- Installation of the Heat Detector Assembly must comply with all National and local electrical codes for the country where it is installed.
- The field wire shall be 18 AWG and rated for 392°F (200°C) minimum.

Refer to the following steps for proper installation of the Heat Detector assembly:

Recommendation: For best support, use rigid conduit when installing the heat detector field wiring.

1. After proper mounting of the Heat Detector Housing, unscrew the enclosure cover, exposing the field wire terminals.
2. Ensure the connections between the Heat Detector and Terminal Block have not become loose during shipping, tighten as required.
3. Strip 0.3" (7.6mm) of the insulation from the ends of Input connection A & B.
4. Insert field wire through port.
5. With a flat tip .14 (3.6mm) screw driver, loosen Input connection A & B set screw.
6. Insert the exposed end of input connection A and B into the terminal block as shown.
7. Tighten locking screws hand tight plus ¼ turn.
8. Thread Heat Detector cover hand tight and tighten.
9. Secure cover in place by tightening the locking set screw located within the cover with a 1/16 (4.2mm) hex "Allen" wrench.

Note: For additional detail, refer to the following figures.



This literature is provided for informational purposes only. KIDDE-FENWAL, INC. assumes no responsibility for the product's suitability for a particular application. The product must be properly applied to work correctly. If you need more information on this product, or have a particular problem or question, contact KIDDE-FENWAL, INC.



Fenwal Controls, Kidde-Fenwal Inc.
 400 Main Street
 Ashland, MA 01721
 Tel: 800-FENWAL-1
 Fax: 508-881-7619
www.fenwalcontrols.com